

Polystone® P CubX®

Finally, some good news for tank constructors.

Newly developed: The tank construction sheet Polystone® P CubX®. Featuring a unique inner cube structure for an outstanding stiffness to weight ratio. Reduces steel reinforcement considerably. The time saving in tank construction is enormous.



Developed especially for chemical tank and plant construction: Polystone® P CubX®, the innovative sheet with the inner cube structure.

Fast, safe and efficient construction of rectangular tanks

As an expert in tank construction, you know: even quite small rectangular tanks for applications in chemical apparatus construction normally require elaborate steel reinforcement. To protect the steel reinforcement against corrosion cladding with plastic profiles is required, which have to be elaborately cut to size and welded. With Polystone® P CubX® Röchling has now developed an **innovative new tank construction sheet**.

High longitudinal and transversal stiffness

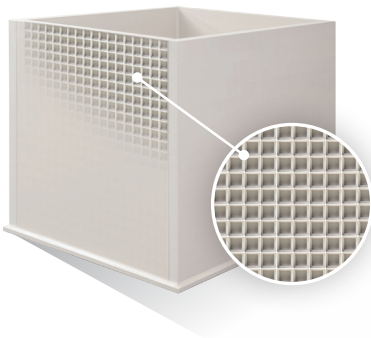
Polystone® P CubX® consists internally of a homogeneous, rectangular (orthogonal) grid pattern, welded to two sheets on its outsides, which form the sheet surface. This innovative structure endows the sheet with a low weight and a very high longitudinal and transversal stiffness.

Enormous time saving

Thanks to the high stiffness of the sheet, the steel reinforcement is greatly reduced or eliminated completely, depending on the size of the tank. The manufacturing effort is greatly reduced in this way and you save time and resources.

Easy handling

A Polystone® P CubX® sheet with a thickness of 57 mm has the same stiffness as a solid plastic sheet made of PP with a thickness of 35 mm, but weighs only half as much. This simplifies the handling of the sheets.



Inner grid structure: Endows Polystone® P CubX® with a high isotropic stiffness at a very low weight

Applications

- Rectangular tank, for example, for galvanic plants, steel-pickling plants, sewage technology, cleaning systems, swimming pool technology, purification systems, tank fittings, flood retention
- Lids and partitions for round tanks
- Housings and shelves for ventilation systems
- Retrofitting and repair of rectangular tanks

Product range

- Format: 2,000 x 1,500 mm
- Thickness: 57 mm
- Colour: grey (RAL 7032) standard from warehouse, other colours are available on request

Tried-and-tested material

Polystone® P (PP), tried and tested for generations worldwide in the construction of rectangular and round tanks